

Artist's Rendering

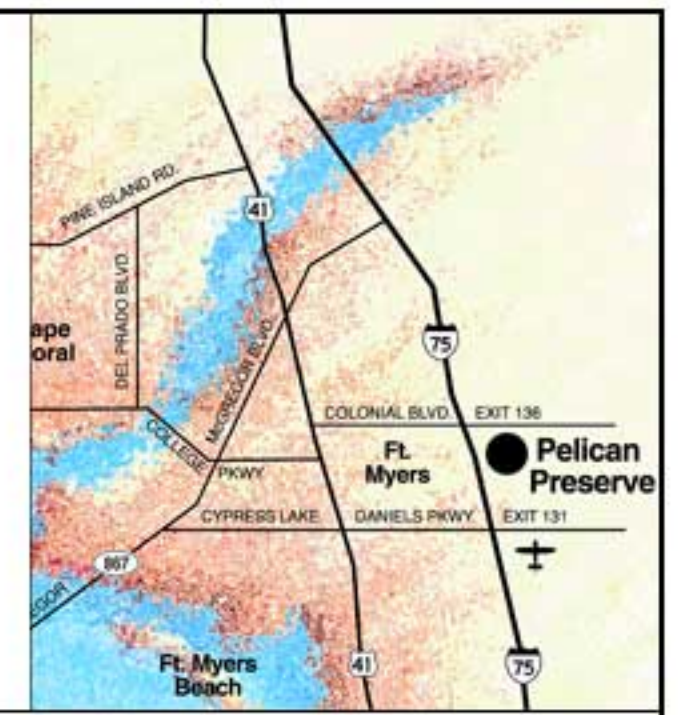


Pelican Preserve™

Sales & Information Center

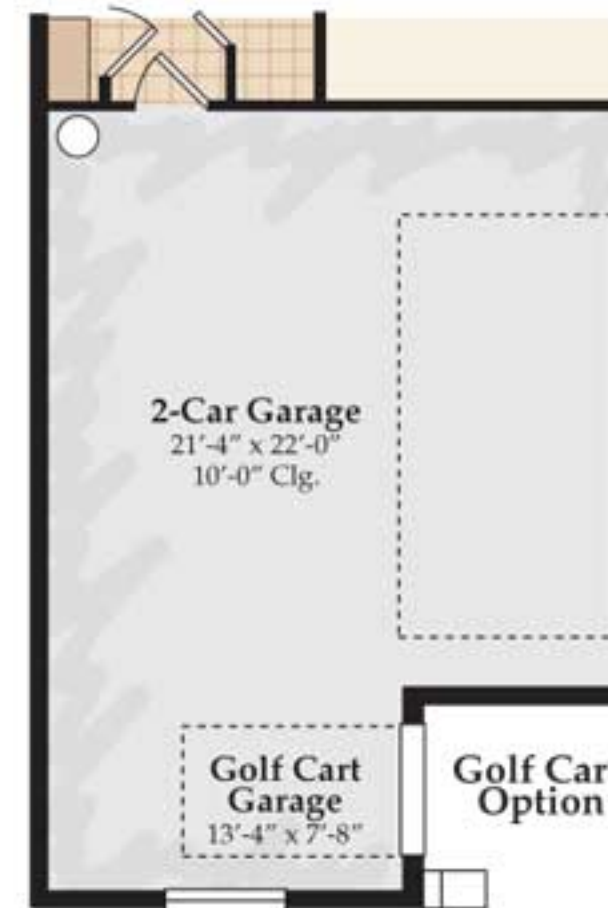
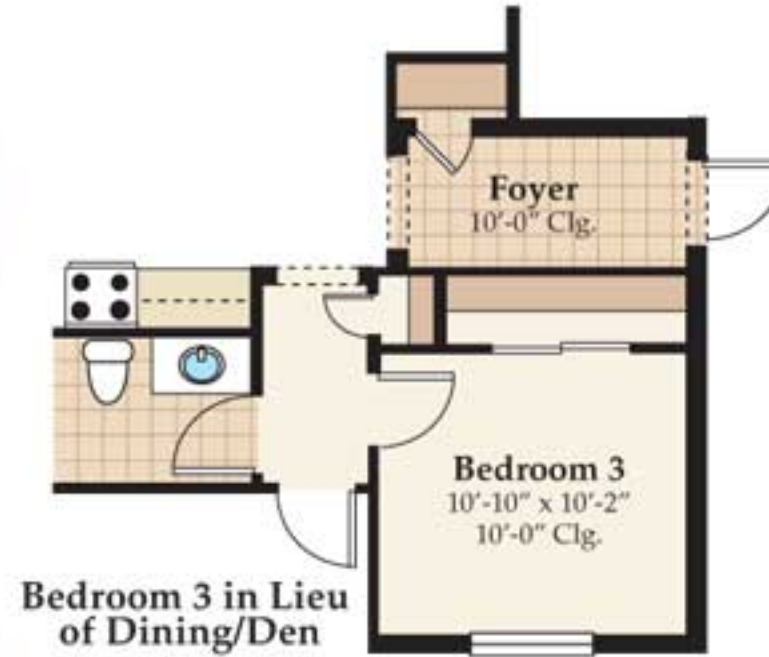
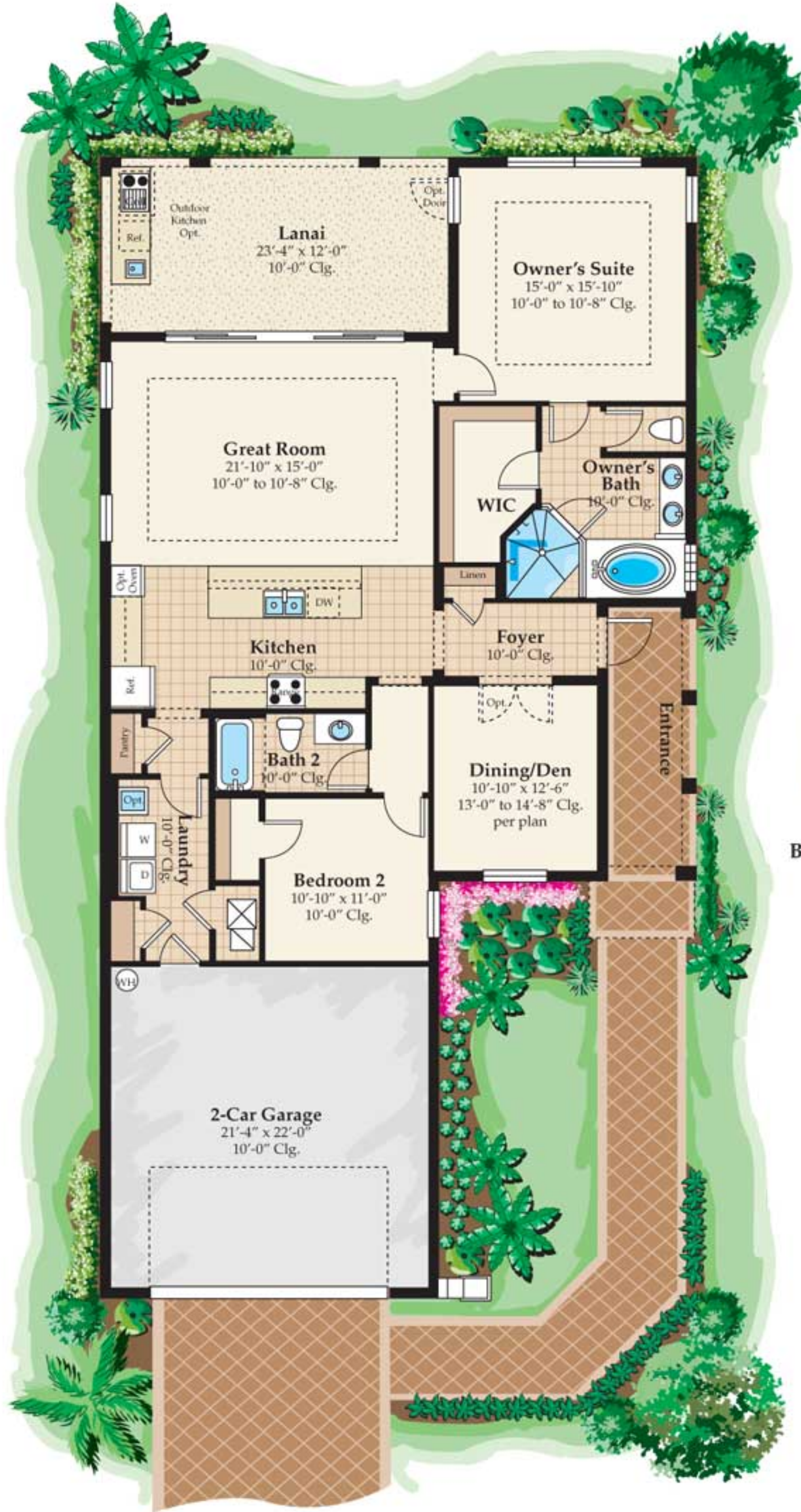
10571 Veneto Drive | Ft. Myers, FL 33913

(239) 985-1600 | (877) 881-5973 | PelicanPreserve.com



**Dolci
Tiberio**

Single-Family
1,720 Sq. Ft. | 2 Bed + Den + Great Room / 2 Bath



ORAL REPRESENTATION CANNOT BE RELIED UPON AS CORRECTLY STATING REPRESENTATIONS OF THE DEVELOPER. FOR CORRECT REPRESENTATIONS, MAKE REFERENCE TO THIS BROCHURE AND TO THE DOCUMENTS REQUIRED BY SECTION 718.503, FLORIDA STATUTES, TO BE FURNISHED BY A DEVELOPER TO A BUYER OR LESSEE.

THE ABOVE DRAWINGS ARE CONCEPTUAL ONLY AND ARE SUBJECT TO CHANGE WITHOUT NOTICE AT THE DISCRETION OF THE DEVELOPER. THE DEVELOPER RESERVES THE RIGHT TO MAKE ADDITIONS, DELETIONS AND MODIFICATIONS TO THE DRAWINGS AS THE DEVELOPER MAY DEEM APPROPRIATE OR DESIRABLE. DIMENSIONS AND SQUARE FOOTAGES ARE APPROXIMATE AND MAY VARY WITH ACTUAL CONSTRUCTION. THE RESIDENCE'S SQUARE FOOTAGE TOTALS INDICATED ABOVE ARE APPROXIMATE, MAY VARY DUE TO CONSTRUCTION AND ARE BASED ON PERIMETER MEASUREMENTS. INDIVIDUAL ROOM DIMENSIONS INDICATED ABOVE ARE APPROXIMATE, MAY VARY DUE TO CONSTRUCTION, AND MAY VARY FROM THE RESIDENCE'S SQUARE FOOTAGE TOTALS INDICATED ABOVE. COPYRIGHT 2006© WCI COMMUNITIES, INC. ALL RIGHTS RESERVED. WCI TERMS OF USE.

